

world." To commemorate Johnston's contributions, the State of Michigan erected a historical marker at the South Haven Station in 1966. On it are listed the eight yellow-fleshed freestone cultivars which Johnston bred in the course of 45 years of dedicated service to peach growing in America and the world.

References

1. Johnston, S. Breeding the Haven series of peach varieties. Proceedings XVIth International Hort. Congress, Brussels, Belgium, pg. 83-86.
2. Scorza, R., S. A. Mehlenbacher, and G. W. Lightner. 1985. Inbreeding and coancestry of freestone peach cultivars of the eastern United States and implications for peach germplasm improvement. *J. Amer. Soc. Hort. Sci.* 110:547-552.

Fruit Varieties Journal 41(2):52-53 1987

'Goldcrest' Peach

D. W. RAMMING¹ AND O. TANNER²

Abstract

Additional index words. *Prunus persica*, fruit breeding, embryo culture.

'Goldcrest' is a very early-ripening peach (*Prunus persica* (L.) Batsch) developed by the Quality Maintenance, Genetics and Transportation Research Unit of the Horticultural Crops Research Laboratory, Fresno, Calif. from the embryo culture program. 'Goldcrest' bears attractive, well colored, round, yellow-fleshed fruit and is introduced to provide quality fruit, very early in the season for California and areas with similar climate.

Origin

'Goldcrest' resulted from open pollination of FV9-164 = (FV89-14 x Springtime) Fig. 1. 'Goldcrest' was selected in 1979 from a progeny of 207 seedlings of FV9-164, an early-ripening

selection in which the seed normally aborts at fruit maturity. All seedlings were produced by embryo culture techniques (1) in 1976 and planted in the field in 1977. 'Goldcrest' was tested as P53-21 in California.

Description

'Goldcrest' is a very early-ripening peach cultivar which ripens 10 days ahead of 'Springcrest' or about May 10 at Fresno, Calif. Fruit of 'Goldcrest' are large for their maturity season (ripening 60 days after bloom), averaging 6.3 cm in diameter or 97 g with adequate thinning. The fruit are round and semi-freestone (Fig. 2). The flesh is yellow, firm, but melting and of

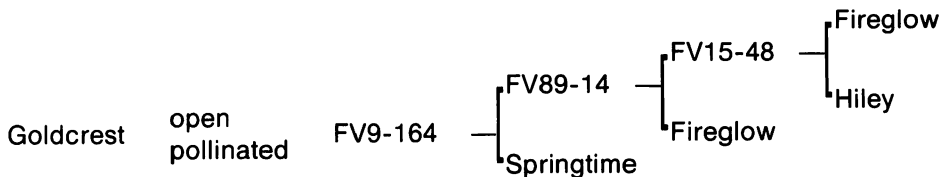


Figure 1. Pedigree of 'Goldcrest' peach.

¹Research Horticulturist and ²Agricultural Research Technician, Horticultural Crops Research Laboratory, U.S. Department of Agriculture, Agricultural Research Service, Fresno, California 93727.

Table 1. Performance of 'Goldcrest' in comparison with 'Maycrest' and 'Springcrest'.

Character	Rating ^z		
	'Goldcrest'	'Maycrest'	'Springcrest'
Chilling requirement (hr)	650	650	650
Fruit set	6	7	7
Fruit size (cm dia)	6.4	6.6	6.9
Shape	7	8	8
Percent red blush	7	5	5
Attractiveness	7	7	7
Flesh firmness	6	8	7
Flesh adherence to pit	4	4	4
Flesh texture	6	7	6
Flesh quality	6	7	6
Ripe date	10 May	16 May	20 May

^zRatings were subjective on a scale of 1 (least desirable) to 9 (most desirable).

good flavor. A bright red blush covers approximately 70% of the peach at shipping maturity. The undercolor is bright yellow and pubescence is light. The performance of 'Goldcrest' relative to 'Maycrest' and 'Springcrest' is presented in Table 1.

Trees of 'Goldcrest' are moderately vigorous and moderately productive. Flowers have large showy petals and are self-fertile. The leaf petiolar glands are reniform. The chilling requirement to break the rest period appears to be about 650 hr since 'Goldcrest' blooms with 'Springcrest' which requires approximately 650 hr chilling at Fresno, Calif. 'Goldcrest' was found free of *Prunus* ring spot and Prune dwarf virus.

Availability

Limited quantities of budwood are available and requests should be sent to David W. Ramming, USDA, ARS, 2021 South Peach Avenue, Fresno, CA 93727.



Figure 2. Fruit of 'Goldcrest' peach harvested in Arvin, Calif.

Literature Cited

1. Smith, C. A., C. H. Bailey, and L. F. Hough. 1969. Methods for germinating seeds of some fruit species with special reference to growing seedlings from immature embryos. New Jersey Agr. Expt. Sta. Bul. 823.