

# Two New Peaches for New Jersey

by

L. F. HOUGH and CATHERINE H. BAILEY, New Brunswick, N. J.

Sunrise, formerly NJ 133 and Blake, formerly NJ 117, are two new varieties of peaches released by the New Jersey Agricultural Experiment Station in co-operation with the New Jersey Peach Council.

*Sunrise* is a yellow-fleshed, open-pollinated seedling of Hale x 41SD (Slap-py x Dewey). It ripens about two weeks before Jerseyland or just before Early East. The fruit of Sunrise is of good size, about  $2\frac{1}{2}$  inches in diameter, although it may tend to be small when not thinned properly. It is three-quarters to fully covered with red, but does not get dark. It is an oval-shaped semi-clingstone peach, with flesh that is only moderately firm.

Sunrise crops better than Early East and does not develop as many split pits. Its dormant fruit buds are as hardy as those of Golden Jubilee. The flowers are not showy and produce good pollen.

*Blake* is named in honor of the late Professor M. A. Blake.

It is a yellow-fleshed, fully freestone seedling of J. H. Hale x Primrose (Belle x Elberta), ripening a week before Elberta.

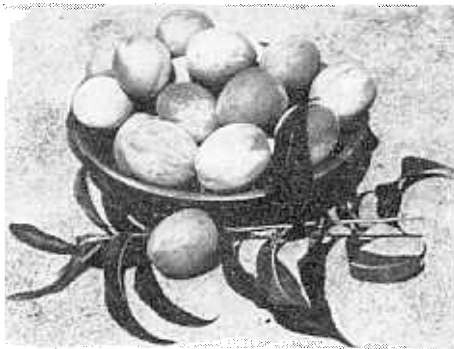


Fig. 1. Sunrise, a new attractive, yellow-fleshed peach ripening 10 days to two weeks before Jerseyland.

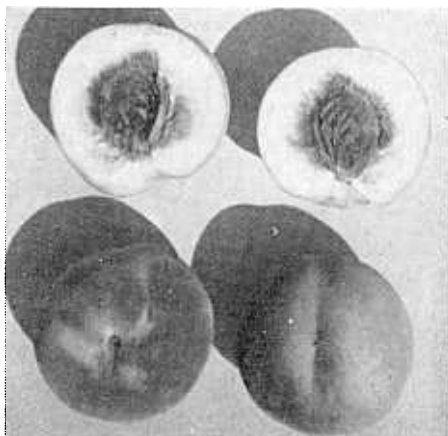


Fig. 2. Blake, an attractive, yellow-fleshed peach ripening a week before Elberta.

The fruit of Blake is large and round. It has short pubescence and is three-quarters covered with an attractive red over bright yellow. The fruit hangs well and stays quite firm for several days after the ground color has turned bright yellow. The flesh of Blake is very firm, and makes a very attractive frozen product, the bright yellow flesh color contrasting with the bright red around the pit cavity, even after freezing. Its quality, however, is only average, being similar to J. H. Hale in this respect. Occasionally it has also had a few split pits and some surface cracks.

The tree of Blake is medium sized, vigorous and productive. Its dormant fruit buds are as hardy or somewhat hardier than Elberta. The flowers are medium sized, not showy and produce viable pollen.

Both Sunrise and Blake are resistant to bacterial leaf spot.

Trees of Sunrise and Blake are available from the New Jersey Peach Council, Inc., R D #3, Princeton, N. J.